

Managing Aerodromes Airfields & Airports





A little about me.

This was our airport
when we took over.





Now it looks like
this.





We're pretty well known for skydiving



With a background
in software
development it
was only a matter
of time

Aimm



BETTER MEASUREMENT
FOR BETTER AIRPORTS

ARE YOU SEEING THE PATTERNS IN YOUR AIRPORT'S OPERATION?



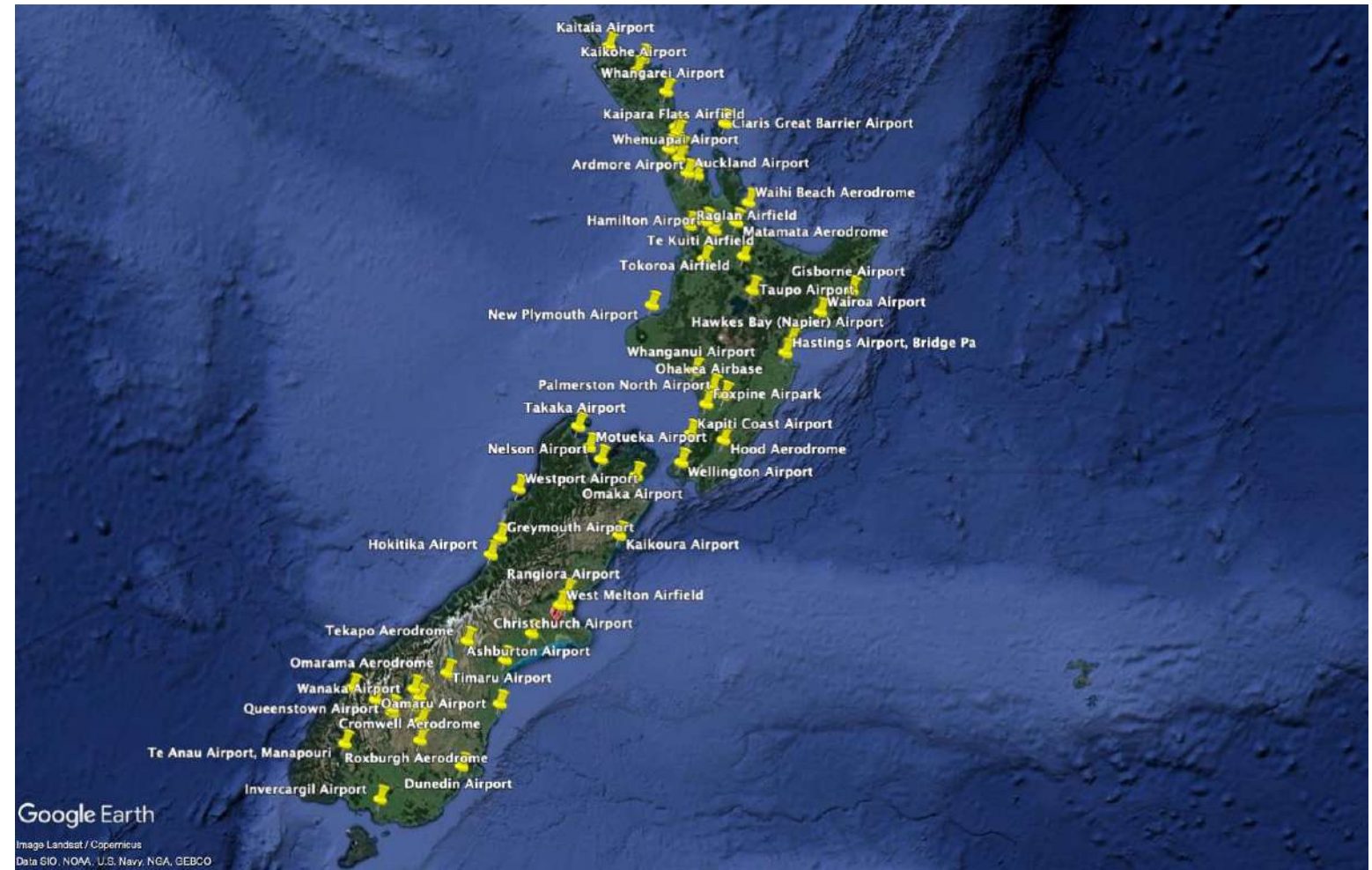


GAIN CLARITY AND INSIGHTS IN TIME TO MAKE A DIFFERENCE.
BETTER MEASUREMENT FOR BETTER AIRPORTS

Sometimes
just for fun,
I go to more
airports...



What are
Airports and
where does
Council fit in?



An airfield
can be this.





Or it can be this.

There is a lot of
history at our
airports.





They're important recreational facilities and gathering places

And also
business
hubs

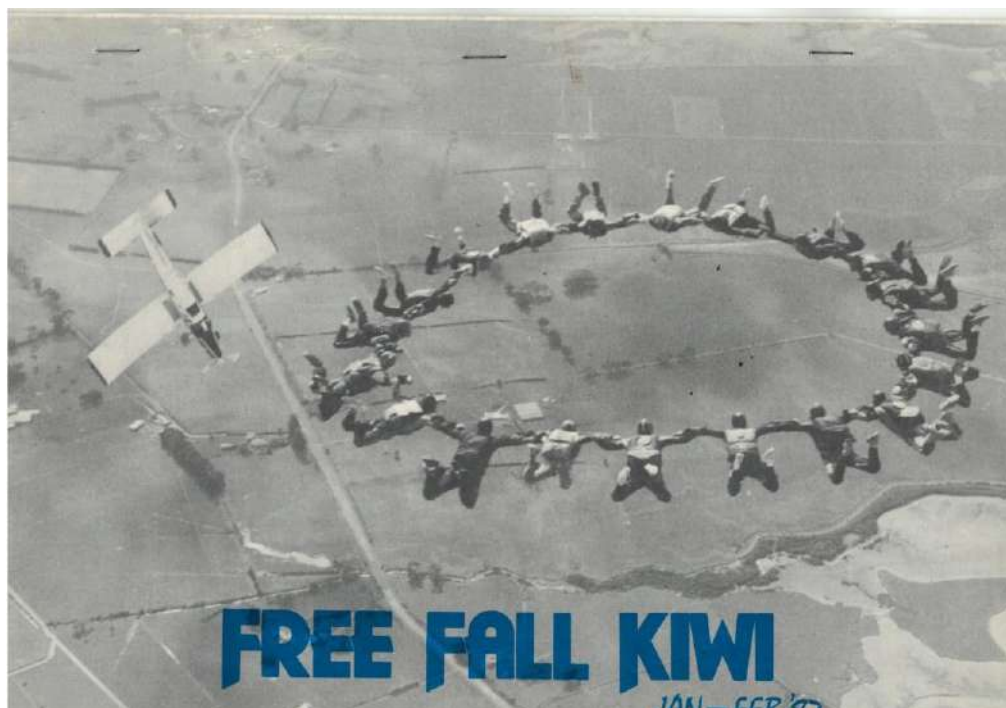


Sometimes
without realising it,
we expect a lot
from our airports.



But we don't always
agree...





What does good management look like?

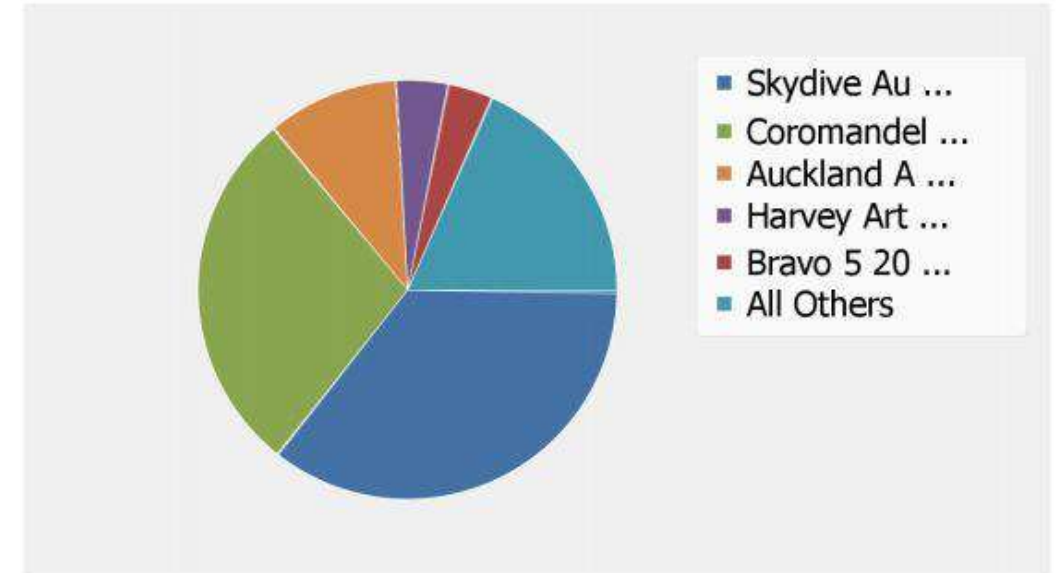
Most Active Operators

Operator

Skydive Auckland Ltd
Coromandel Flying Club
Auckland Aero Club (Inc)
Harvey Arthur Lockie
Bravo 5 2010 Limited
All Other Operators
Total

Movements

313
248
89
35
30
164
879

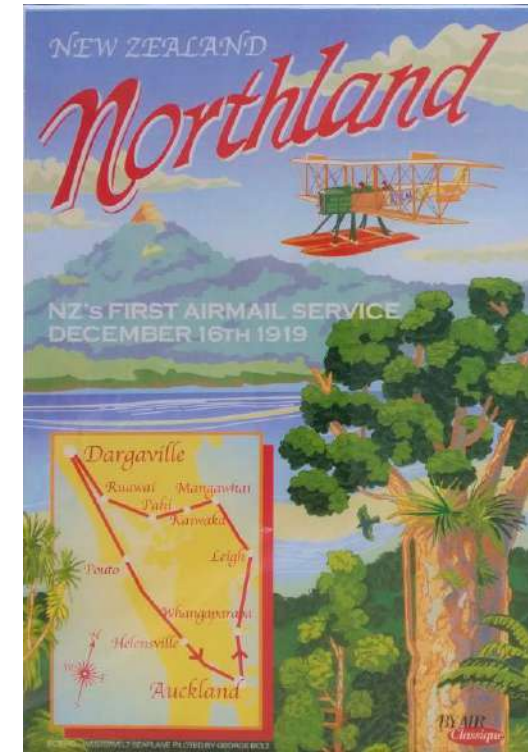
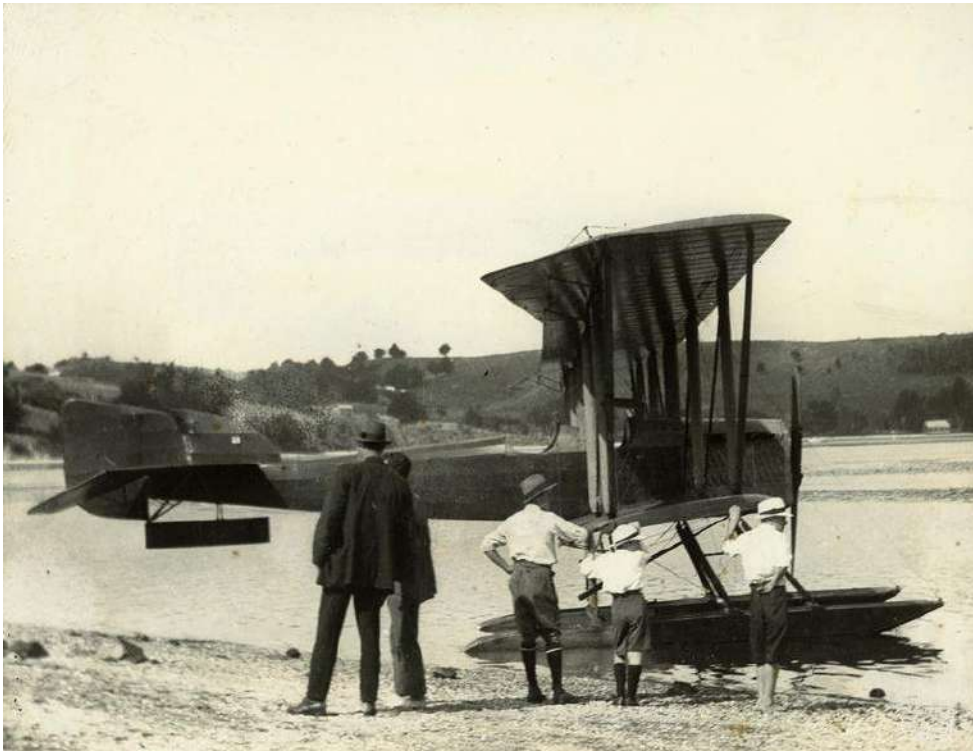


We understand our airport

We understand
our users.

- Who they are
- What they do
- What they
need from us



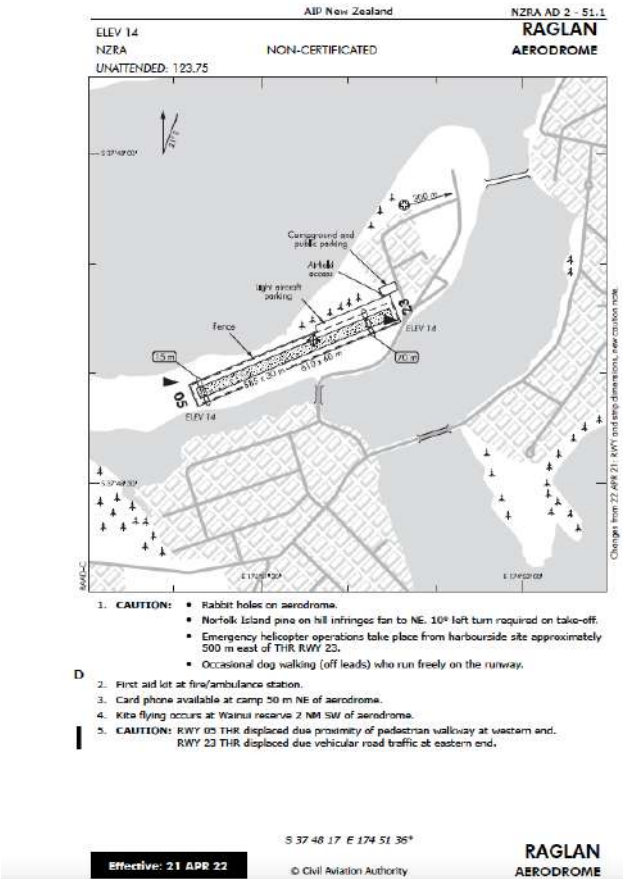
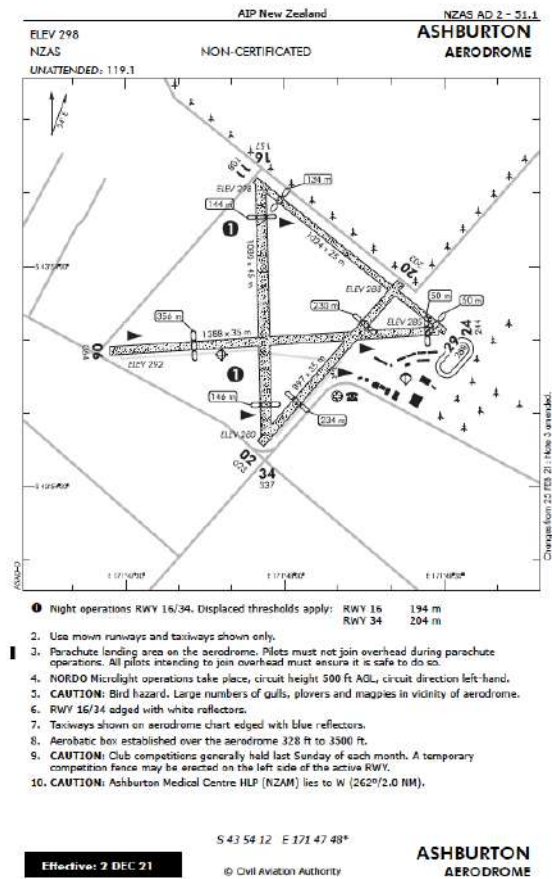


We have clear expectations, and communication channels



Responsibilities, Regulations & Compliance

Accurate description





Subpart I — Operating requirements – non-certificated aerodromes

139.501 Application of Subpart

- (a) Except as provided in paragraph (b), this Subpart applies to an aerodrome operator.
- (b) This subpart does not apply to:
 - (1) an aerodrome operator certificate holder;
 - (2) a qualifying aerodrome operator certificate holder;
 - (3) the operator of an aerodrome that is used or intended to be used exclusively by aircraft engaged in agricultural operations.

139.503 Unsafe conditions

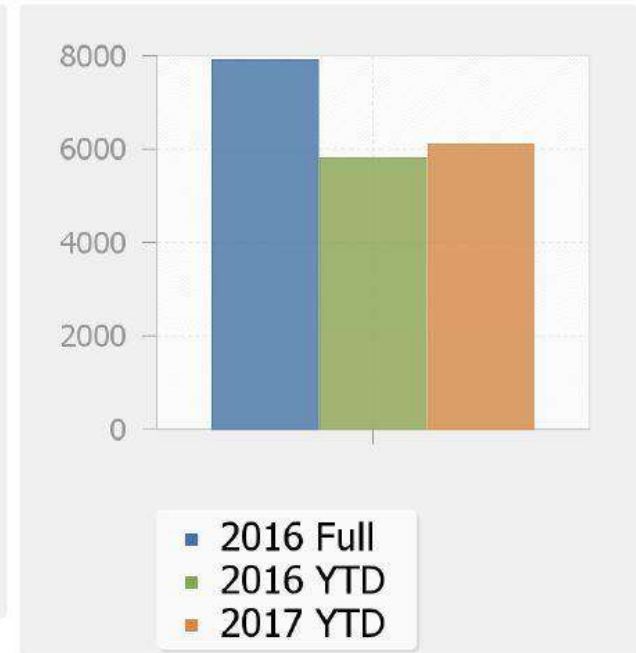
An aerodrome operator to which this subpart applies must establish procedures to ensure that aircraft movements are restricted or prohibited on parts of the aerodrome where an unsafe condition exists.

139.505 Reporting traffic volumes

An aerodrome operator to which this subpart applies must—

Address and correct unsafe conditions

Movements: Months of Year



Accurately report usage to CAA

Safety





What does safety look like?

Developing
good safety
culture can
be a journey





Challenges

Too busy to
change



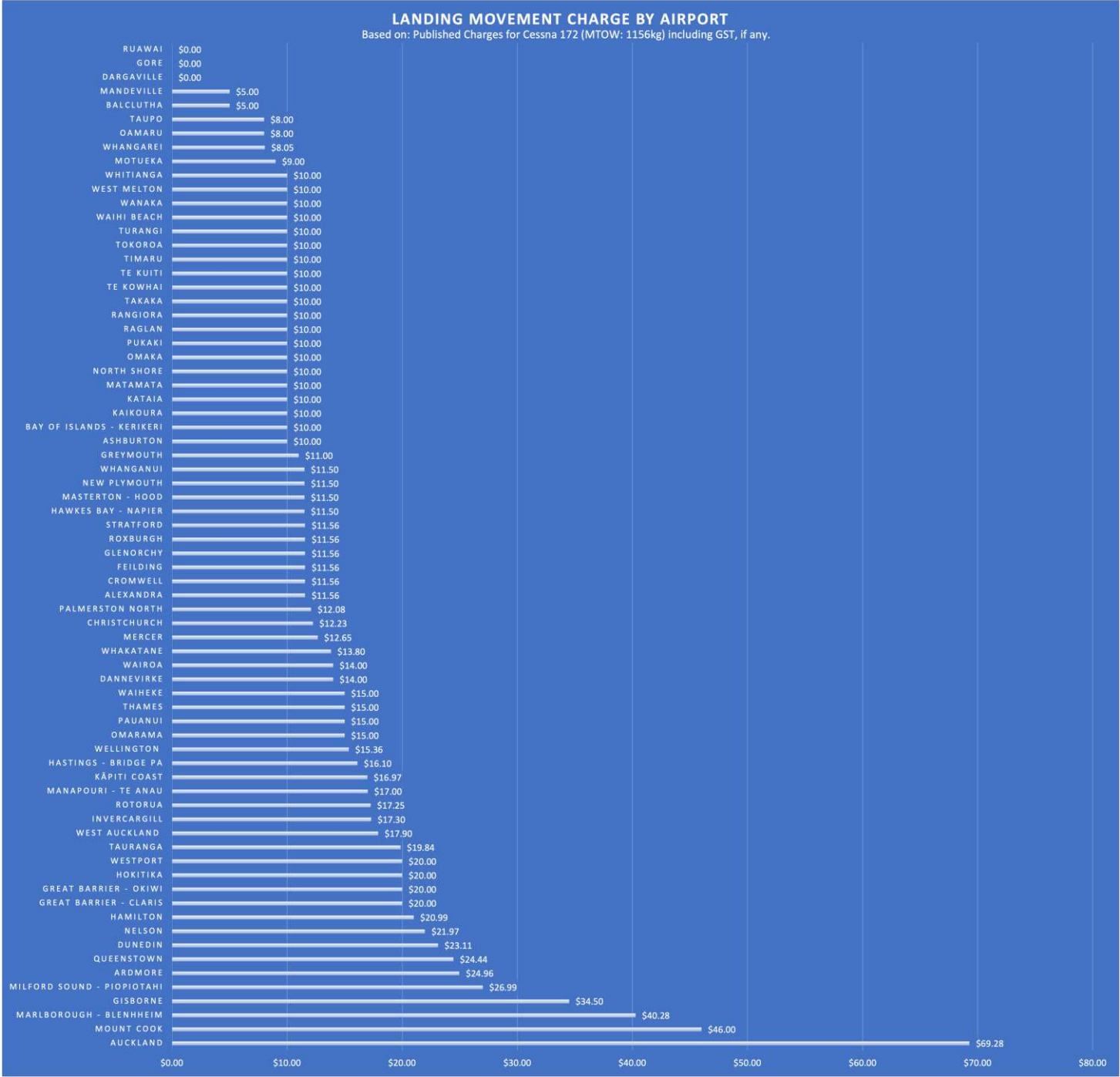
Who is doing
the work and
who is paying?



Goals



Landing Charges



Tools



Opportunities



Thanks for
listening.

Any questions?

